

# B.15 MODELMAKING AWARDS 2025

## Submission Guidelines 2025

B.15 Modelmaking Awards are given to students of any course and any year group at MSA. They are judged on a mix of reasoning, skill and final product and it's important to note, no single criteria – all models are of interest. The award recognises the use of modelmaking in your design work for the 24/25 academic year and consists of a cash prize.

### What are we looking for?

Any individual or group projects from the 24/25 academic year where modelmaking has been used to explore, develop or present your studio work, whatever it is and whatever it is made from, if it's a model that helped you develop and tell the story of your project it's worthy of submission! Shortlisting will look for originality, build quality, materials choice and overall execution to make a decision on the final candidates.

Submissions can include:

- (A) A single model
- (B) Multiple models from any/ all your 24/25 project work, **as one submission.**
- (C) Group Projects (Include all group members names in the submission)

Individuals can submit their project work independently and as part of a group submission.

### What to you need to do and when?

Submissions must follow the format as outlined in the submission requirements on the next page. You must stick to the criteria to maintain consistency in the submissions document.

Please stick to the guidelines and formatting to avoid having to make later corrections. We reserve the right to exclude submissions that do not conform to the guidelines.

All submissions must be submitted using the form link (below) no later than 12pm on Monday June 2nd. **Submissions can not be accepted after this time.**

Submission Entry Form Link [Here](#)

## Some FAQ

### What if my work isn't on show?

Please get in touch with us. Any shortlisted work that is not scheduled to feature in the end of year show will be displayed at B.15 for judges to view during their visit on 6th June.

### I didn't use the workshop to make my model can I still submit?

YES – this is an award for good use of modelmaking- not exclusively models made in workshops.

### I don't think my work is good enough should I submit?

YES – all modelmaking work submitted will be included in a combined document for judges to see and for prospective employers and professionals to view via our blog. It can't hurt to show off your hard work alongside your fellow coursemates and may lead to a job!

### I haven't done a 'final model', should I submit?

YES – the awards are not about final models exclusively but consider the use of all kinds of models for all stages of your projects.

### I have more than one model, can I submit them all?

YES – many submissions are made up of multiple models (see previous submissions) so please feel free to include multiple models and describe them in your accompanying text.

You must however only submit one entry. **Do not submit each model as a separate submission.**

### Can I submit more than one individual entry?

NO - only one entry per person will be judged.

### What if I'm in a group and we all want to submit?

Group projects can be submitted as one entry and will be considered as a single submission. If a group wins then the prize will be split accordingly.

You can submit one individual entry and also be part of a group entry.

# Submission Requirements + Instructions

## Content

- Text explaining your work (350 words)
- 3 Images (1 cover image and 2 layouts)
- 3 captions to accompany the images

## Image Format

Your cover Image should be a single square image showing the overview of your model/ project.

Image layouts could show process work or details. These can be single images or layouts following the grid guidelines in the template files (on the B.15 Awards blog [here](#)).

## Filenames

Please follow the naming convention below, exporting our three images at 300 dpi in JPG format:

square\_cover\_image.jpg

image\_layout\_1.jpg

image\_layout\_2.jpg

## Instructions

Use the online submission form to make your entry to the awards. You will need the above information and your three image files to submit.

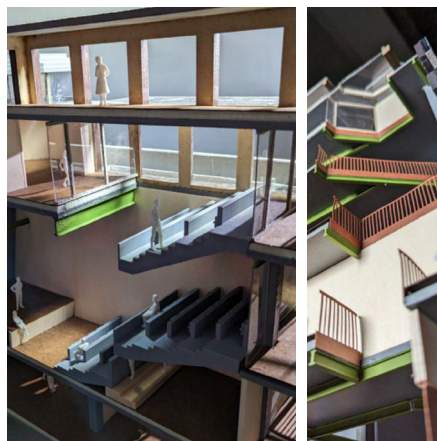
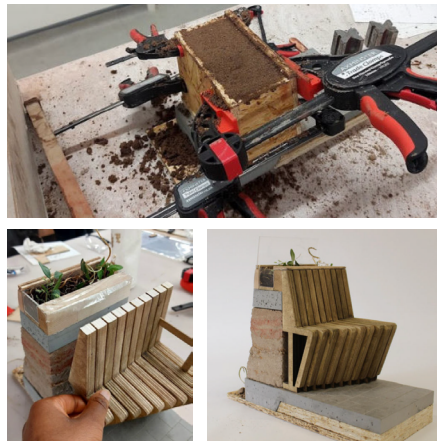
square\_cover\_image.jpg



image\_layout\_1.jpg



image\_layout\_2.jpg



Examples/ illustrations of possible cover images and the two image layouts.