

B.15 MODELMAKING AWARDS 2024

Submission Guidelines 2024

To mark the 10th anniversary of the B.15 Model-making Awards 10 prizes will be given to students of any course and any year group at MSA. They are judged on a mix of reasoning, skill and final product and it's important to note, no single criteria – all models are of interest. The award recognises the use of modelmaking in your design work for the 23/24 academic year and consists of a cash prize.

What are we looking for?

Any individual or group projects from the 23/24 academic year where modelmaking has been used to explore, develop or present your studio work, whatever it is and whatever it is made from, if it's a model that helped you develop and tell the story of your project it's worthy of submission! Shortlisting will look for originality, build quality, materials choice and overall execution to make a decision on the final candidates.

Submissions can include:

- (A) A single model
- (B) Multiple models from any/ all your 23/24 project work, as one submission.
- (C) Group Projects (Include all group members names in the submission)

Individuals can submit their project work independently and as part or a group submission.

What to you need to do and when?

Submissions must follow the format as outlined in the submission requirements on the next page. You must stick to the criteria to maintain consistency in the submissions document.

Please stick to the guidelines and formatting to avoid having to make later corrections. We reserve the right to exclude submissions that do not conform to the guidelines.

All submissions must be submitted using the form link (below) no later than 12.00 on Monday on June 10th.

Submission Entry Form Link [Here](#)

Some FAQ

What if my work isn't on show?

Please get in touch with us. We hope to display all entries that are shortlisted but not scheduled to feature in the end of year show at B.15 for judges to view when they visit during the week of June 14th.

I didn't use the workshop to make my model can I still submit?

YES – this is an award for good use of modelmaking- not exclusively models made in workshops.

I don't think my work is good enough should I submit?

YES – all modelmaking work submitted will be included in a combined document for Judges to see and for prospective employers and professionals to view via our blog. It can't hurt to show off your hard work alongside your fellow course-mates and may lead to a job!

I haven't done a 'final model', should I submit?

YES – the awards are not about final models exclusively but consider the use of all kinds of models for all stages of your projects.

I have more than one model, can I submit them all?

YES – many submissions are made up of multiple models (see previous submissions) so please feel free to include multiple models and describe them in your accompanying text. They must however be under one submission entry only. **Do not submit each model as a separate submission.**

What if I'm in a group and we all want to submit?

Group projects can be submitted as one and will be considered as a single submission. If a group wins then the prize will be split accordingly.

Submission Requirements + Instructions

Content

- Text explaining your work (350 words)
- 3 Images (1 cover image and 2 layouts)
- 3 captions to accompany the images

Image Format

Your cover Image should be a single square image showing the overview of your model/ project.

Image layouts could show process work or details. These can be single images or layouts following the grid guidelines in the template files on the B.15 Awards blog post [here](#).

Filenames

Please follow the naming convention below, exporting our three images at 300 dpi in JPG format:

square_cover_image.jpg

image_layout_1.jpg

image_layout_2.jpg

Instructions

Use the online submission form to make your entry to the awards. You will need the above information and your three image files to submit.

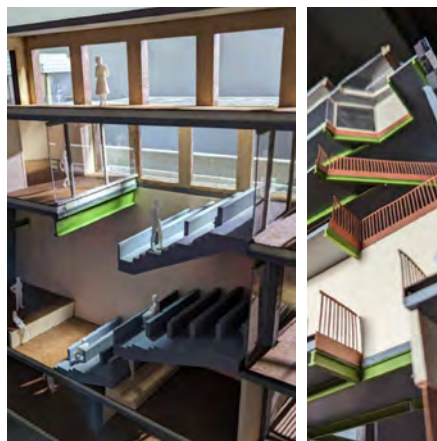
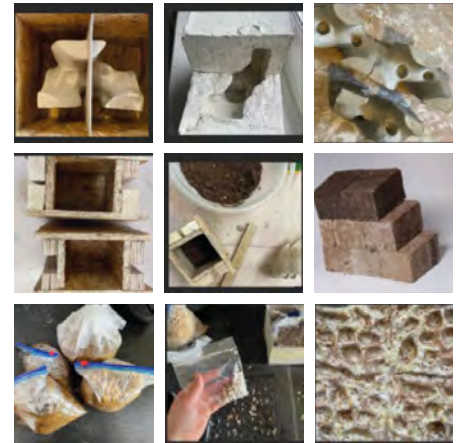
square_cover_image.jpg



image_layout_1.jpg



image_layout_2.jpg



Examples/ illustrations of possible cover images and the two image layouts.